



Installation and Deployment

Help Documentation

This document was auto-created from web content and is subject to change at any time.

Copyright (c) 2021 SmarterTools Inc.

Installation and Deployment

Browser Requirements

SmarterStats is fully supported by the browsers below.

- Google Chrome 10 and higher
- FireFox 3.6 and higher
- Safari 3 and higher
- Opera 10 and higher
- Internet Explorer 9 and higher

SmarterStats System Requirements

SmarterStats was designed to operate efficiently with multiple applications on the same server based on the following minimum requirements:

- Windows 7, Windows 8**, Windows Server 2003 or higher, including Windows Server 2012**
- Microsoft .Net 4.0
- SmarterStats Web server (included)* or IIS 6.0+

One of the unique benefits of SmarterStats is its ability to manage the resources it consumes. Therefore, the resources used by SmarterStats can be adjusted to work in any environment with a variety of other desktop or server applications. For example: On a machine with multiple applications running, the system requirements can be adjusted to account for a number of different factors on the server (such as other processes that are running, the size of individual websites, the amount of traffic, the size of the log files generated, etc.). For more information, see Deployment Guides .

*SmarterStats includes a basic Web server, so the product is fully functional upon installation--even without the existence of IIS or other Web servers. However, SmarterTools recommends installing Microsoft IIS 7.0 or higher in place of the SmarterStats Web server for increased performance, reliability and security in medium to high-volume environments. For more information, see Running SmarterStats as an IIS Site .

SmarterStats Enterprise Remote Service

If you are running SmarterStats Enterprise with the remote service, SmarterTools recommends the following requirements:

- Windows Server 2008 R2 or higher
- Microsoft .NET 4.0 Framework (including all applicable service packs and/or patches)

Note: IIS 7.0 requires that the IIS 6.0 Management Compatibility (and all subsets therein) to be installed.

The remote service can run on any server on which log files reside. It can also use FTP to pull the log files from other servers or it can be configured to pull log files from a network location. Most sites will require the service to use 256MB of RAM or less. However, sites with an abnormal amount of unique page names or sites with extremely large log files (greater than 1GB per day) could require more RAM. Please keep this in mind when looking at a specific Web server's hardware configuration (CPU, available memory, etc.).

In addition, the Web interface communicates with the remote service via port 50003. Firewalls or any other security measures that might prohibit communication from this port must have rules established to open this port.

Note: Every installation and environment is unique. Extra load caused by excessive volume and/or other factors may require more disk space, memory, database allocation, etc. No warrantee or guarantee is expressed or implied as to the efficacy or viability of these recommendations for a particular environment or application.

**Only the most current versions of SmarterStats (7.6 or higher) were tested on Windows 8 and Windows Server 2012. Previous versions may install on Windows 8 and/or Windows Server 2012 and run. However, some work arounds may be necessary to get them to run well. See the SmarterTools knowledge base for more information.

Installation

SmarterStats comes as a single installation file that contains everything necessary to run the product. The SmarterStats installer can be downloaded from www.smartertools.com . Both the free and the licensed editions of SmarterStats are contained within this installation file, so it is not necessary to download or install the file again if you purchase a license after trying the free edition. For more information, see [Activating SmarterStats](#)

Please refer to the KB article [How To - Install SmarterStats](#) for step-by-step installation instructions.

Note: If you plan to install SmarterStats Enterprise on a remote server, use the service MSI installer package in addition to the standard installer.

Also, Windows Server 2003 users may need to install SmarterStats from Add/Remove Programs in the control panel in order for file permissions to be properly set.

Running as an IIS Site

By default, SmarterStats installs a basic Web server that allows companies to start using the application immediately after installation. However, SmarterTools recommends moving to a more robust and secure Web server, such as Microsoft IIS. For step-by-step instructions on configuring SmarterStats to run with Microsoft IIS 7.0, please refer to the KB article [How To - Set up SmarterStats as an IIS Site](#) .

Alternatively, you may run SmarterStats as a virtual directory under an existing site. However, this is not recommended. For more information, please refer to the KB article [How To - Set Up SmarterStats as a Virtual Directory Under an Existing IIS Site](#) .

Note: This help topic assumes familiarity with Microsoft IIS and how it works. SmarterTools recommends using the basic Web server included with SmarterStats if you are unfamiliar with or uncomfortable using Microsoft IIS.

Activating SmarterStats

In order for SmarterStats to function for more than a single site, the product must be activated using a valid license key. In addition, if SmarterStats is moved to another server or assigned to a different database, the product may need to be reactivated.

To access the product activation wizard, first log in as a system administrator and click the Settings icon . Then click the Activation folder and click Licensing in the navigation pane. The edition and license level information for the version of SmarterStats currently being used will load in the content pane.

To activate or reactivate a valid license key, click the Activate or Reactivate button in the actions toolbar. (You need to Activate new licenses, but if you move SmarterStats to a new server or modify the license level, you will need to Reactivate). For step-by-step activation instructions, please refer to the KB article [How To - Activate SmarterStats](#) . Note: Activation of a license key requires the server to contact SmarterTools over port 443 (HTTPS). Please ensure that any firewall or internet security software you have installed allows an outgoing TCP port 443 request.

[Return to Getting Started](#)

Upgrading SmarterStats

Because the SmarterStats download contains all of the installation files needed for any licensing level or edition, upgrading editions or levels is relatively easy. With a valid license key, companies can easily upgrade to the Professional or Enterprise editions or increase the number of sites allowed in

SmarterStats. For more information, see the [Activating SmarterStats](#) . For step-by-step instructions, please refer to the KB article [How To - Upgrade SmarterStats Levels and Editions](#) .

The steps for upgrading to SmarterStats from an older version of the application vary depending on which version you are currently using. For more information, please refer to the KB article [How To - Upgrade SmarterStats](#) . Note: SmarterStats Enterprise users that have installed the remote service on machines other than the Web interface server should update the remote service before updating the main SmarterStats server.

SmarterStats Deployment Guide

Introduction

Who Should Use This Document

This document is intended for use by all users of SmarterStats to help determine the most effective architecture to gather statistics on their websites and/or in hosted environments.

Determining the Required Architecture

The authors have chosen to divide their recommendations into four categories: individual website deployments, low-volume deployments, medium-volume deployments, and high-volume and specialized deployments. For the purposes of these recommendations:

- Individual website deployments are those in which the Free edition of SmarterStats is utilized to gather statistics on one domain either locally or on a remote, hosted server.
- Low-volume deployments are those where a purchased edition of SmarterStats is reporting on up to 250 websites—based locally and/or on remote servers delivering log files to the SmarterStats server for analysis.
- Medium-volume deployments are those in which a purchased edition of SmarterStats is reporting on up to 2,000 websites from multiple remote Web servers and/or locally hosted websites. NOTE: SmarterTools recommends no more than 5000 sites per server in medium- and high-volume deployments.
- High-volume and specialized deployments are those in which a higher-level Enterprise edition of SmarterStats is reporting on tens of thousands of websites per Management Reporting Server (MRS) across potentially distributed networks in a variety of methods. NOTE: SmarterTools recommends no more than 5000 sites per server in medium- and high-volume deployments.

If you have questions about which category may be the best one for your environment, contact sales@smartertools.com for additional information and assistance.

Calculating Disk Space Requirements

SmarterStats uses advanced data storage techniques that enable it to store log files as relational files (called SmarterLogs) that are faster to query and much smaller than the original log files. On average, SmarterStats can store the same log data in 10% to 15% of the hard disk space required by the original log files.

SmarterStats can also export log data to the original log format, eliminating the need to keep raw log files for extended periods of time, resulting in a substantial savings in disk space usage. In most cases, customers actually free up hard drive space on their servers when using SmarterStats instead of taking additional space.

In distributed installations, the MRS is a Web reporting engine that only serves as a request/response engine. It is for this reason that an MRS can handle up to 30,000 websites in a single installation. The MRS itself does not store any imported log data (unless there are sites on the MRS being processed). Log data on distributed Web servers is contained on the remote service installations.

Understanding CPU Requirements

SmarterStats was engineered to process statistics quickly, and to reduce CPU requirements when other processes are running. This allows SmarterStats to run on the Web server without negatively affecting the performance or delivery of the websites on the server.

If the server is dedicated to SmarterStats, or if the server is used strictly as a SmarterStats collector (described herein), the authors recommend allocating additional CPU capacity to the SmarterStats and/or collector processes to increase performance. For instructions on how to make this change, please refer to the Knowledge Base article [How To -- Configure SmarterStats to Use More CPU to Process Logs](#).

Recommended CPU requirements for medium and high-volume deployments are included in this section. However, it should be noted that the following recommendations are estimates based on the average utilization by an average number of sites with an average number of hits. System administrators may need to adjust their CPU requirements based on their site and/or server needs.

CPU Requirements for MRS

MRS fall into three different categories: Web servers reporting on up to 250 sites; high-volume MRS that do not act as collectors and process a maximum of 30,000 sites; and high-volume MRS acting as a collector for a maximum of 1,500 sites and reporting on a maximum of 30,000 total sites.

For Web servers reporting on up to 250 sites, the authors recommend a single-core 1.5 GHz processor.

For high-volume MRS that do not act as collectors and process a maximum of 30,000 sites, the authors recommend a single-core 1.5 GHz processor.

The authors also recommend a dual-core 2.5 GHz processor for high-volume MRS that act as a collector for up to 1,500 sites and report on a maximum of 30,000 total sites.

CPU Requirements for Collectors

The authors recommend a single-core 1.5 GHz processor for collector servers that perform no other tasks besides processing log files from a maximum of 2,000 sites.

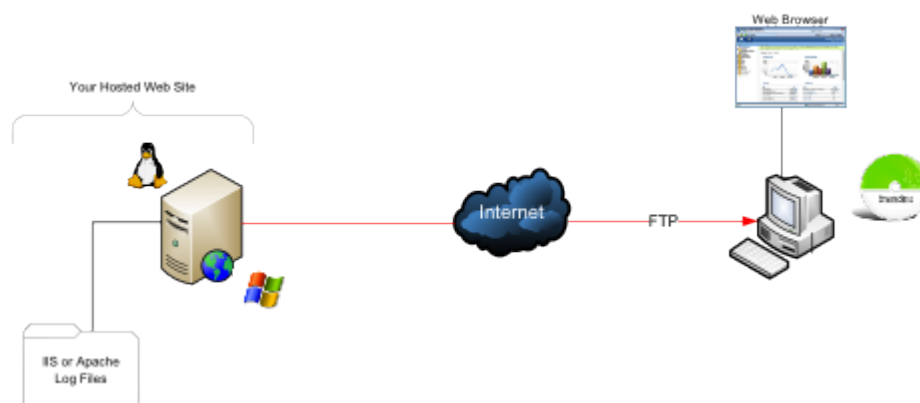
Web Servers Using Remote Agents

The authors recommend a dual-core 2.5 GHz processor for individual Web servers running remote agents for up to 1,000 websites.

Individual Websites (SmarterStats Free Edition)

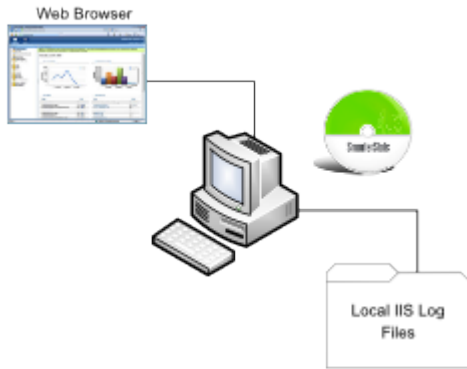
The free edition of SmarterStats can be used to collect statistical data for a single website. In this case, SmarterStats needs to be installed on a user's PC. In the scenario below, the user has a hosted website so the website's log files need to be downloaded via FTP and then imported into SmarterStats. Once the importing process is complete and the SmarterLog files are created, website traffic reports can be generated and viewed via the PC's Web browser.

Remote Web Server and Local SmarterStats Installation



Local Website and SmarterStats Installation

In this scenario, SmarterStats is installed on the same PC or server as the website. This eliminates the need to download the log file via FTP since the website log files are stored locally.



System Recommendations

The authors recommend the following hardware for SmarterStats local machines (PCs):

- 512 MB RAM
- 100 MB hard disk space (only allows for SmarterStats, .NET Framework and small website logs)
- IIS 6* or higher with the Microsoft .NET 4.0 Framework (with all applicable service packs and/or patches)
- Windows Operating System:
 - Windows XP (Home or Professional, SP2 recommended)
 - Windows 2003 or higher
 - Windows Vista
- The Web interface supports the following browsers:
 - Internet Explorer 6 and higher
 - Firefox 2 and higher
 - Google Chrome 2 and higher
 - Opera 10 and higher
 - Safari 1.7 and higher

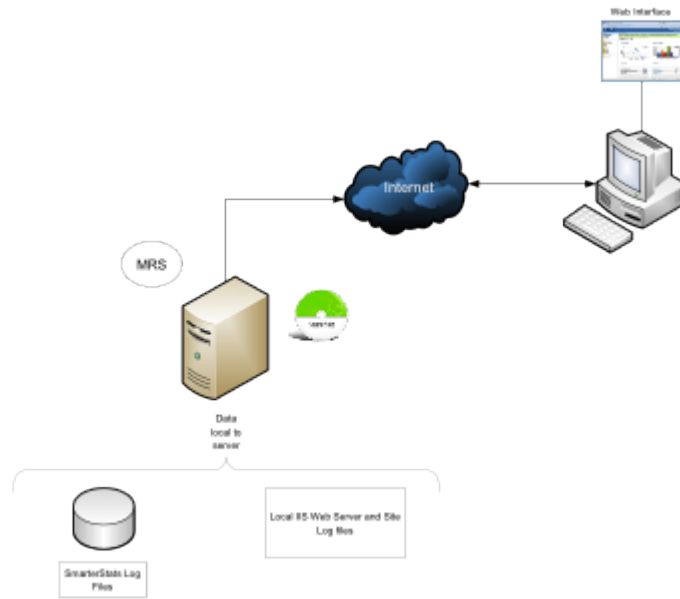
*SmarterStats includes a basic Web server so that the product is fully functional upon installation—even without the existence of IIS or other Web servers. Although not required in single-site and low-volume installations, it is recommended to install IIS 6 or higher in place of the SmarterStats Web server for increased performance and security.

Low-volume Deployment (One Web Server)

Low-volume deployments are those in which a purchased edition of SmarterStats is reporting on up to 250 websites—based locally and/or on remote servers delivering log files to the SmarterStats server for analysis.

SmarterStats Professional or Enterprise Edition

SmarterStats is installed directly on the Web server where it can import the locally stored IIS log files.



System Recommendations

The authors recommend the following hardware for SmarterStats local servers:

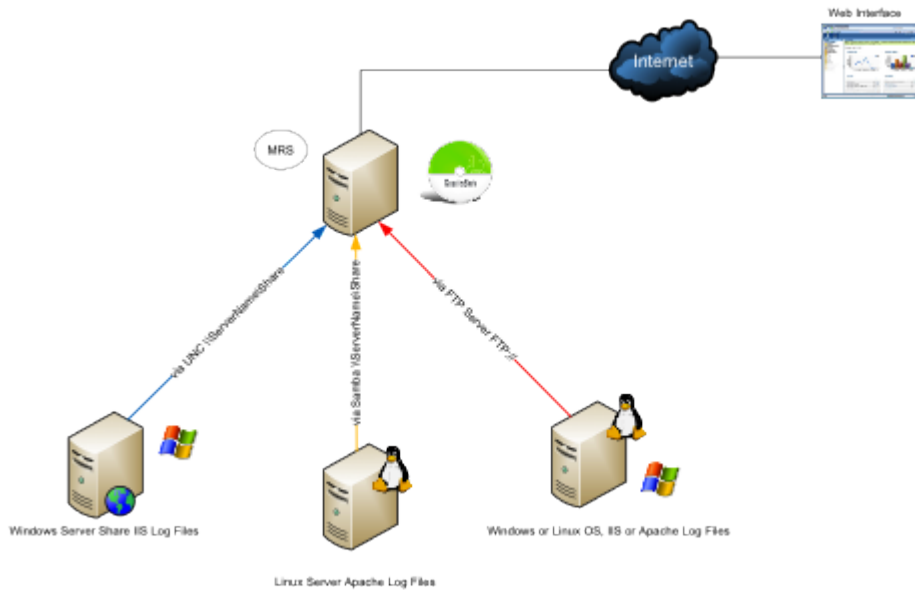
- Windows 2003 or higher
- 512 MB RAM
- 1/5 of the total disk space that would be required to store the raw LOG formats
- IIS 6 or higher

Medium-volume Deployments (Multiple Web Servers)

Medium-volume deployments are those in which a purchased edition of SmarterStats is reporting on up to 2,000 websites from multiple remote Web servers and/or locally hosted websites.

SmarterStats Professional with Shares

SmarterStats Professional can import website logs files from Windows IIS Web servers via UNC Shares or FTP server. In addition, SmarterStats can import log files from Linux Apache servers via Samba Shares and FTP server.



System Recommendations

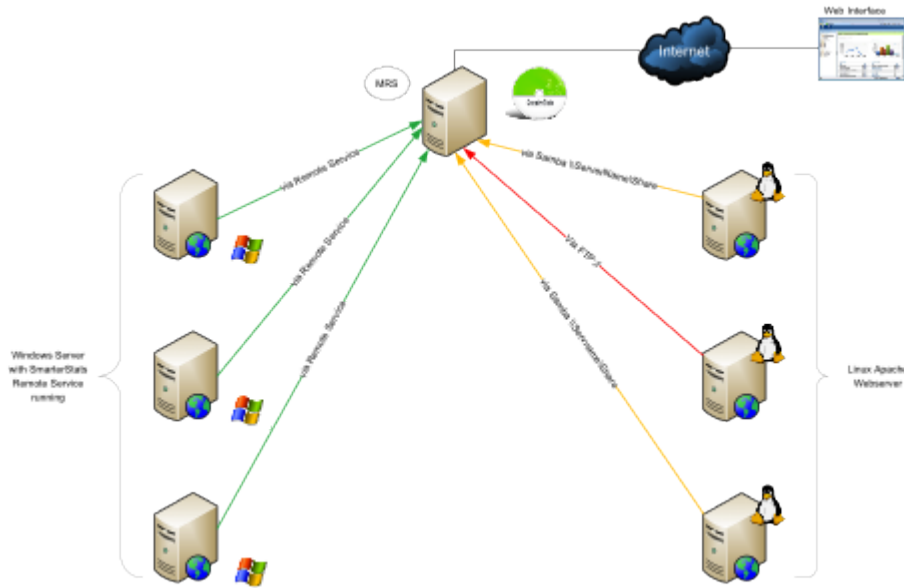
The authors recommend the following hardware for SmarterStats medium-volume distributed networks:

- Windows 2003 or higher
- 1 GB RAM
- 1/5 of the total disk space that would be required to store the raw LOG formats
- IIS 6 or higher

SmarterStats Enterprise Edition

This configuration shows SmarterStats Enterprise edition's flexibility. The imports log files from Linux Apache Web servers via Samba Shares and FTP servers. In addition, SmarterStats receives reports from the SmarterStats Remote Service running on Windows Web servers. MRS

Running the SmarterStats Remote Service on the Windows Web server is the most efficient configuration in terms of speed and system utilization.



System Recommendations

The authors recommend the following hardware for SmarterStats Enterprise medium-volume distributed networks:

MRS

- Windows 2003 or higher
- 1 GB RAM
- 200 MB hard disk space
- IIS 6 or higher

Web Servers Using Remote Agents

- 2 GB RAM
- 1/5 of the total disk space that would be required to store the raw LOG formats
- Microsoft .NET 4.0 Framework (including all applicable service packs and/or patches)
- Windows Operating System:
 - Windows XP
 - Windows 2003 or higher
 - Windows Vista

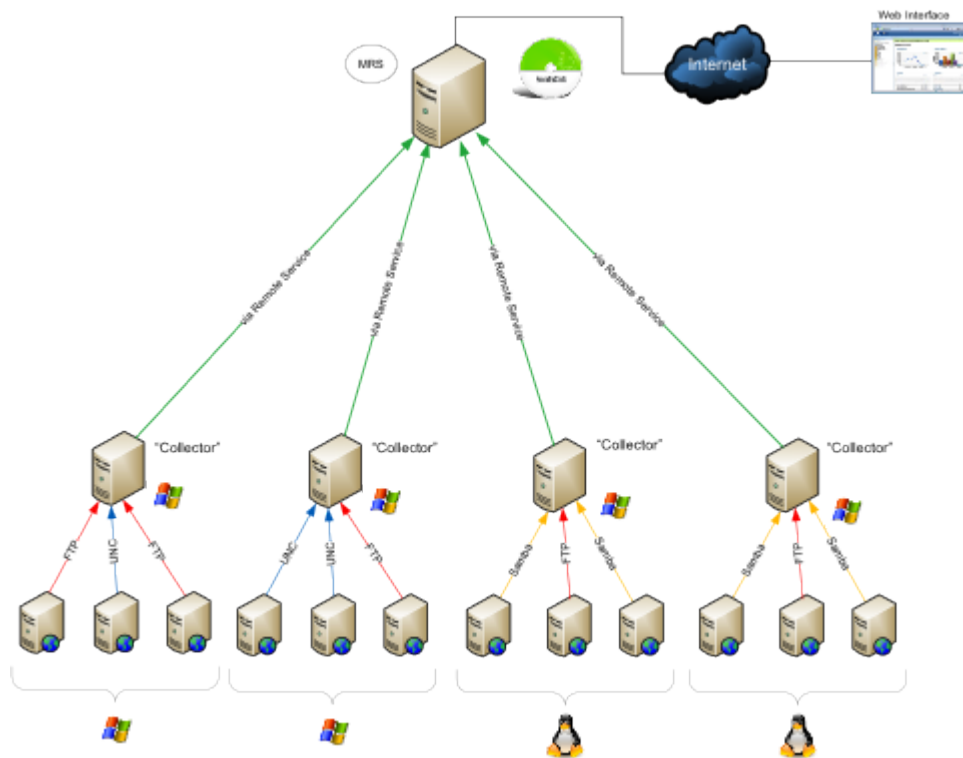
Note: For ease of installation on Web servers and collectors, an automatable setup package containing just the remote service is available as a separate download.

High-volume and Specialized Deployments

SmarterStats Enterprise Edition with Servers Running in a Collector Role

In this configuration, all collectors are Windows-based servers running the SmarterStats Remote Service. Each collector imports data from other Windows IIS Web servers via UNC Shares or FTP servers. Other collectors can import logs from Linux Apache Web servers via Samba Shares or FTP Server.

This method is highly efficient and all SmarterStats log files are created and stored locally. The MRS is only used as the customer user interface when reports are requested from the collectors and then displayed.



System Requirements

The authors recommend the following hardware for SmarterStats Enterprise high-volume collector networks:

MRS

- Windows 2003 or higher
- 1 GB RAM
- 200 MB hard disk space
- IIS 6 or higher

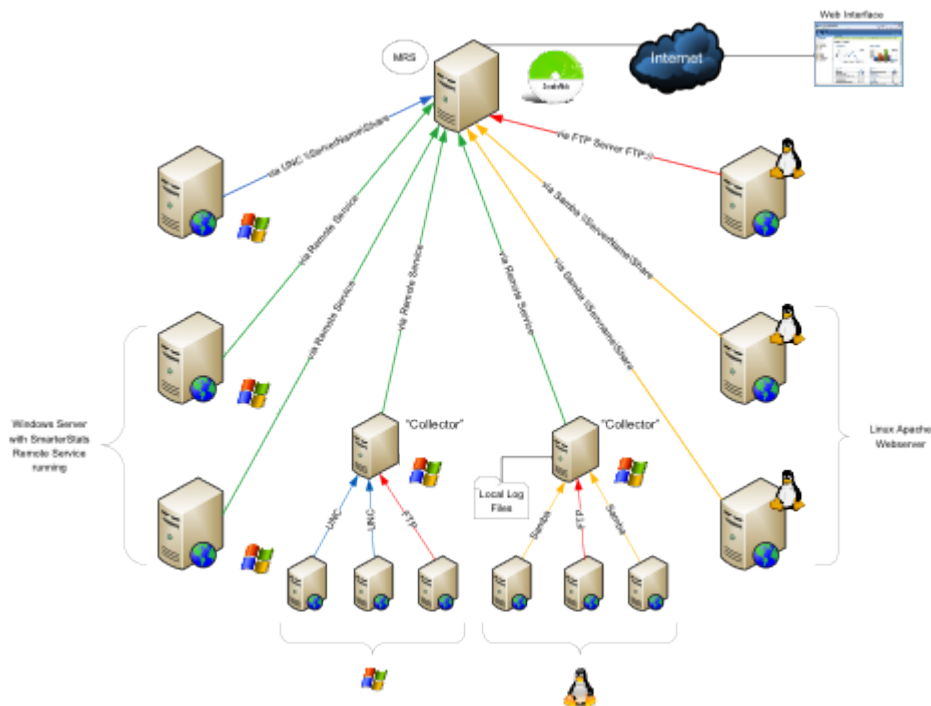
Collector Servers

- 512 MB RAM
- 1/5 of the total disk space that would be required to store the raw LOG formats
- Microsoft .NET 4.0 Framework (including all applicable service packs and/or patches)
- Windows Operating System:
 - Windows XP
 - Windows 2003 or higher
 - Windows Vista

Note: For ease of installation on Web servers and collectors, an automatable setup package containing just the remote service is available as a separate download.

SmarterStats Enterprise Edition Hybrid

This configuration demonstrates the power and flexibility of SmarterStats in its ability to import and provide website statistics from many different sources.



System Recommendations

The authors recommend the following hardware for SmarterStats Enterprise high-volume networks with multiple data collection methods:

MRS

- Windows 2003 or higher
- 1 GB RAM

- 200 MB hard disk space
- IIS 6 or higher

Collector Servers

- 512 MB RAM
- 1/5 of the total disk space that would be required to store the raw LOG formats
- Microsoft .NET 4.0 Framework (including all applicable service packs and/or patches)
- Windows Operating System:
 - Windows XP
 - Windows 2003 or higher
 - Windows Vista

Web Servers Using Remote Agents

- 2 GB RAM
- 1/5 of the total disk space that would be required to store the raw LOG formats
- Microsoft .NET 4.0 Framework (including all applicable service packs and/or patches)
- Windows Operating System:
 - Windows XP
 - Windows 2003 or higher
 - Windows Vista

Note: For ease of installation on Web servers and collectors, an automatable setup package containing just the remote service is available as a separate download.

Load-balanced Websites (Clustering) for High Traffic Websites

A load-balanced (clustered) website is one in which a single website is distributed across more than one server. Another common term for this type of structure is "Web farm". This technique is utilized by very high-volume websites, websites that have particularly high up-time requirements, and/or other mission critical functions that require fail-over resilience exceeding the norm.

There are two common methods of load-balancing: session-based and hit-based. Each method requires following different steps to ensure SmarterStats analyzes the data correctly. Note: The load-balanced deployment is recommended for users of SmarterStats 4.x and earlier. Because the latest versions of SmarterStats allow importing from multiple log sources, this deployment solution does not apply to users of SmarterStats 5.x and later.

Session-based Load Balancing

Session-based load balancers attempt to keep all traffic for a specific visitor on the same server. This is known as "persistence" or "stickiness."

The following steps explain how to copy and rename logs from per-session load-balanced servers to a single server so that SmarterStats can import them. You can alter or adjust these steps to accommodate particular requirements as needed.

On each of the load-balanced servers, do the following:

- Make a new directory on the C: drive called C:\SmarterStatsLogFileMerge
- Create a new batch file using notepad called DoLogFileMerge.bat that contains the code below (all one line).

```
XCOPY "C:\WINDOWS\system32\Logfiles\W3SVC1\*.LOG" "
\\SmarterStats\Logs\Site1\*.LOG_A " /D /Y
```

Note 1: This code assumes that your original logs on this server are contained at C:\WINDOWS\system32\Logfiles\W3SVC1, that SmarterStats is running on a remote server called file://smarterstats/, and that the share \Logs\Site1 is where the logs should be copied to on that server.

Note 2: The file mask *.LOG_A below should be different for each server. For example, other servers may be *.LOG_B, *.LOG_C, etc.

- Save the file and exit Notepad.
- Go to Start → Programs → Accessories → System Tools → Scheduled Tasks
- Add a new scheduled task.
- Click Browse and click the newly created batch file.
- Choose the frequency of the copy you want. Most will want to set this to Daily, starting around 1:00 AM.
- Enter a username and password for a user that has permission to copy to the share you made.
- Save the scheduled task.
- Test the scheduled task by right-clicking it and choosing Run. After it runs, ensure that the logs were successfully copied.

Hit-based Load Balancing

A hit-based load balancer distributes all requests evenly across its websites. For example, a visitor requesting a Web page may receive the HTML from one server and images from one or more other servers. This is the best performing style of load balancing, but it results in stats that are difficult to track because of time differences and delays in logging the data.

If your website is load balanced and separate log storage locations appear on different servers, you will need to manually combine the logs so that SmarterStats can treat them as one website. To do this, you will need a third-party log combining tool, of which many are available and can be found by searching Google.

Additional information regarding this process and aggregation tools may be available within the SmarterTools Knowledge Base and/or community forums accessible through the SmarterTools Portal .

Search Engine Optimization

Users of SmarterStats 5.x and later benefit from the software's search engine optimization (SEO) tools, which help SEO analysts and webmasters monitor SEO campaigns and enhance optimization efforts. SEO processing is performed by the SmarterStats service and each service is limited in the amount of processing it can complete each day.

SEO Processing

In order to retrieve SEO statistics, SmarterStats needs to retrieve search pages from the supported search engines. In order to avoid getting blocked by search engines, page retrievals are limited to one page every 10 seconds. For this reason, the number of page retrievals SmarterStats can do for a specific search engine is limited to six per minute (or 360 per hour or 8,640 per day).

In addition, the number of page retrievals is different for each type of SEO statistic:

- Each keyword added for a site requires 10 page retrievals.
- Each competitor added for a site requires two page retrievals for visibility statistics and one page retrieval for the Google PageRank statistics, resulting in three total page retrievals per competitor.
- Each SEO collection also tracks the user's site, resulting in two page retrievals for visibility statistics and one page retrieval for the Google PageRank statistics (or a total of three page retrievals).

For example, let's assume a SmarterStats site administrator adds two SEO campaigns. The first campaign has four keywords and three competitor sites. The second campaign has six keywords and two competitor sites. The number of page retrievals required is calculated as follows:

Campaign 1				
4 keywords	X	10 page retrievals per keyword	=	40 keyword page retrievals
3 competitor sites	X	3 page retrievals per competitor	=	9 competitor page retrievals

1 local site	X	3 page retrievals	=	3 local site page retrievals

At 10 seconds per page retrieval, it would take 8 minutes and 40 seconds to process the SEO statistics for this campaign.

Campaign 2				
6 keywords	X	10 page retrievals per keyword	=	60 keyword page retrievals
2 competitor sites	X	3 page retrievals per competitor	=	6 keyword page competitor
1 local site	X	3 page retrievals	=	3 local site page retrievals

At 10 seconds per page retrieval, it would take 11 minutes and 30 seconds to process the SEO statistics for this campaign.

In this example, it would take 20 minutes and 10 seconds to process the SEO statistics for the site.

By default, sites are limited to five competitors and five keywords, as a large number of keywords and competitors for a single site could severely limit the processing time available for other sites.

SmarterStats installations with a large number of sites should keep these limits low. However, installations with only a few sites may wish to greatly increase these limits.

As a final note to SmarterStats Enterprise users: Because the processing is done by the SmarterStats service (not the website), an Enterprise version of SmarterStats with 30 remote servers can support 30 times as much SEO processing as a single SmarterStats server.

Summary

The proper configuration and system architecture outlined in this document will provide a solid, reliable foundation. Because variations exist due to different volumes and client needs, the authors suggest starting with these recommendations and then adjusting server proportions, limits, and specifications based on the usage patterns that result.

Automation with Web Services

SmarterStats was built with custom configuration and integration in mind. Developers and/or system administrators have the ability to perform operations on the SmarterStats installation using Web services to automate a variety of different functions and tasks normally available through the product interface.

The Automation with Web Services documentation may include services that have not been released to the public yet or are not available in the version you are using. For the most accurate Web services information, log into SmarterStats as the system administrator and click the settings icon . Then click Web Services in the navigation pane.

Note: Web services are intended for use by high-volume and automated businesses environments and hosting companies as they develop procedures to automate their SmarterStats system and workflow. In addition, this document assumes a basic understanding of Web service technologies programming techniques.